


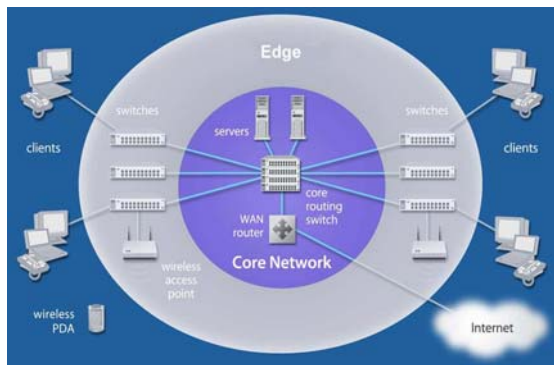
Modern networking challenges 

Today's networks are challenged in many ways:

- Feed users' increasing need for information
 - More users
 - Higher speed
- Support an increasingly mobile workforce
- Combine many kinds of information over same network
 - Data
 - Voice
 - Video
- Provide appropriate access while protecting sensitive information from unauthorized persons
- Maintain acceptable performance

Rev. 4.11b 2

Core-centric networks



- Classic data networks: two- or three-tier hierarchical networks
- Network intelligence concentrated in the core
- Edge or access devices simply forward traffic without decision making

Rev. 4.11b

3

Limitations of classical core networks



The core-centric architecture has significant limitations:

- Security must be enforced at the core because edge devices aren't intelligent
- Prioritization and routing not easily altered to support new applications
- Core decision-making does not enable cost-effective scaling

Rev. 4.11b

4

Introducing HP ProCurve Adaptive EDGE Architecture™



What is an HP ProCurve Adaptive EDGE Network?

- A business-driven network that behaves uniquely and appropriately for every user
- Enables the transformation of the enterprise network to a secure, mobile, multi-service network

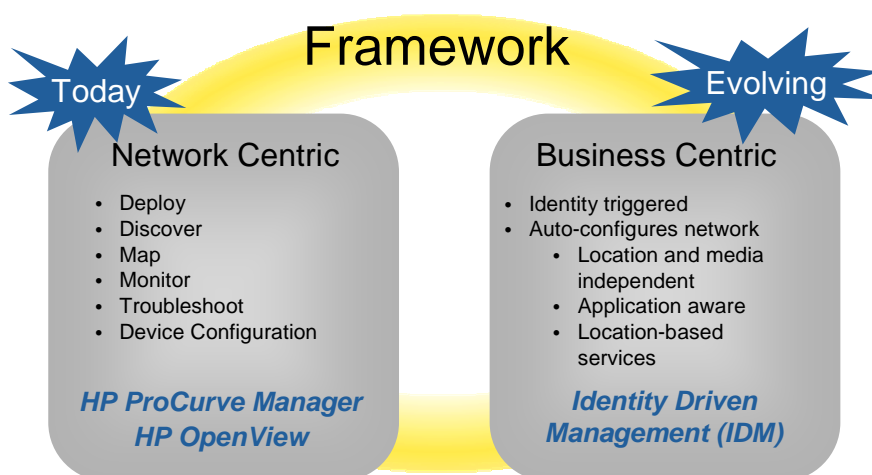
Key principles of Adaptive EDGE Architecture are:

- Command from the Center configures the edge driven by user identity, application and device type
 - Based on business needs
 - Fundamental change in network management
- Control to the Edge moves intelligence out to the point of connection so that decisions are made immediately rather than deferring them to the core

Rev. 4.11b

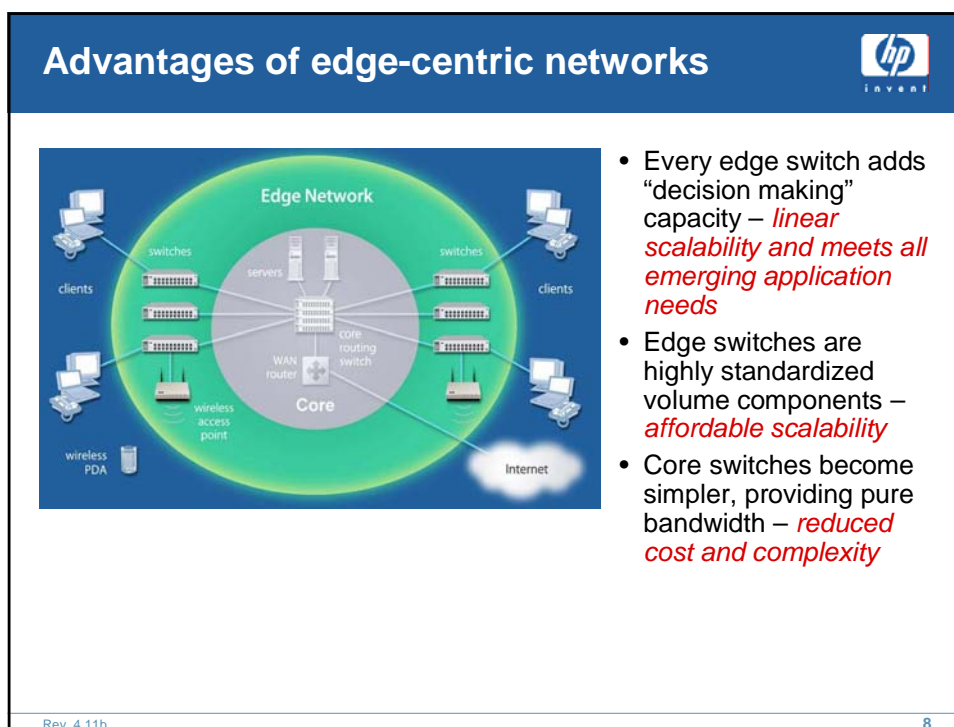
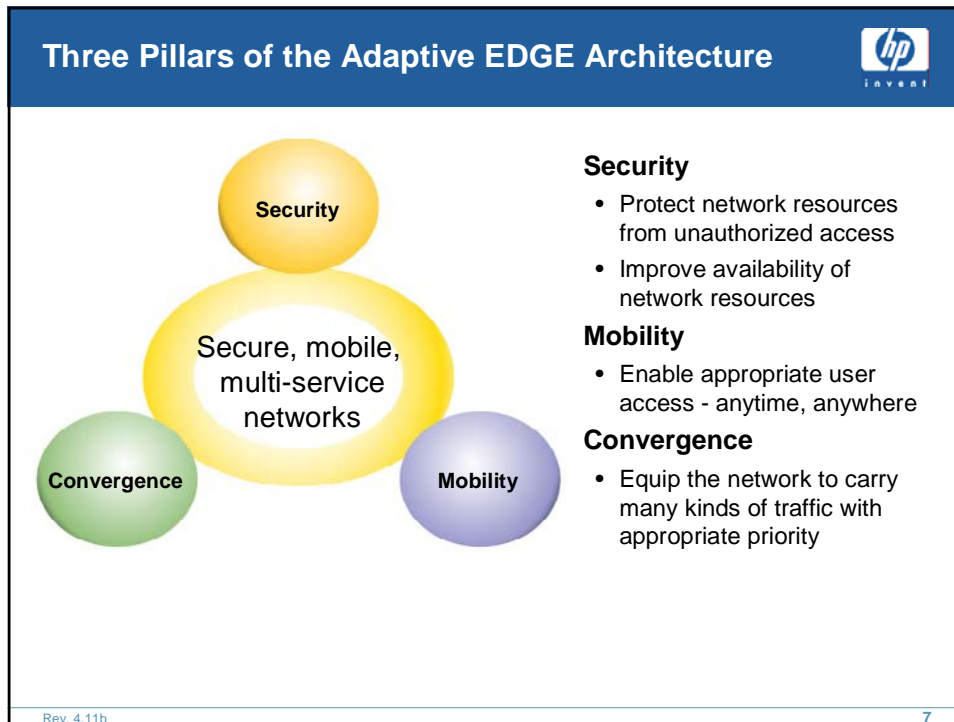
5

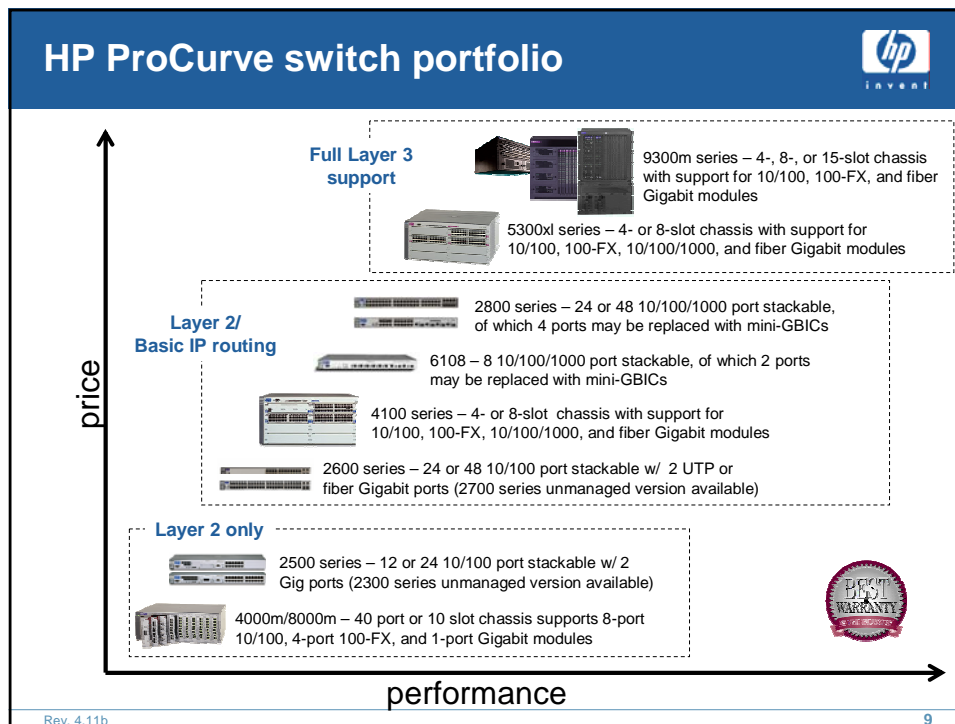
Command from the Center: Managing the Adaptive EDGE





Rev. 4.11b

6





HP ProCurve Switch 2600 series

HP ProCurve Switch 2626

- 24 10/100 ports
- 2 “dual-personality” ports: 10/100/1000 RJ-45 or mini-GBIC slot for a fiber transceiver
- 9.6 Gbps backplane

HP ProCurve Switch 2650

- 48 10/100 ports
- 2 “dual-personality” ports
- 13.6 Gbps backplane

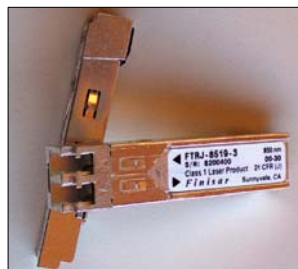
- Supports IEEE 802.1Q VLANs
- Can be configured to forward IP traffic between VLANs

Rev. 4.11b 10

HP ProCurve Gigabit transceivers



Industry standard mini-GBICs compatible with HP ProCurve 2600, 2800, 4100gl, 5300xl, 6100, and 9300 series switches



HP ProCurve Gigabit-SX-LC mini-GBIC

HP ProCurve Gigabit-LX-LC mini-GBIC

HP ProCurve Gigabit-LH-LC mini-GBIC

Rev. 4.11b

11

HP ProCurve Switch 2500 series



HP ProCurve Switch 2512

- 12 10/100 ports
- 2 gigabit transceiver slots
- 9.6 Gbps switch on a chip for non-blocking performance



HP ProCurve Switch 2524

- 24 10/100 ports
- 2 gigabit transceiver slots
- 9.6 Gbps switch on a chip for non-blocking performance

Rev. 4.11b

12

HP ProCurve Gigabit transceivers



May be used with HP ProCurve 2300, 2500,
and 4100gl series switches



HP ProCurve Gigabit-SX Transceiver
HP ProCurve Gigabit-LX Transceiver
(with SC interface)



HP ProCurve 100/1000-T Transceiver
(with RJ-45 interface)



HP ProCurve Switch Gigabit Stacking Kit
(with proprietary cable)

Rev. 4.11b

13

HP ProCurve Switch 5300xl series



HP ProCurve Switch 5308xl

- Eight-slot chassis may contain any of the following modules:
 - 24-port 10/100TX
 - Four-port 100TX/1000T
 - Four-port mini-GBIC module supports standard transceivers
 - 12-port 100FX with MTRJ connectors



hp procurve switch xl 100/1000-T
module (J4821A)
with 4 auto-sensing 10/100 ports



hp procurve switch xl 10/100-TX
module (J4820A)
with 24 auto-sensing 10/100 ports

HP ProCurve Switch 5304xl

- Four-slot chassis - same modules

Bundled 5300xl switches:

- Four-slot chassis with two 24-port 10/100TX modules
- Eight-slot chassis with three 24-port 10/100TX modules



hp procurve switch xl 100-FX MTRJ
module (J4852A)
with 12 100-FX MTRJ ports



hp procurve switch xl mini-GBIC module
(J4878A)
with 4 open mini-GBIC slots

Rev. 4.11b

14

HP ProCurve Switch 4148gl



hp procurve switch gl
mini-gbic module (J4893A)



hp procurve switch gl
100/1000-t module (J4863A)



hp procurve switch gl
10/100/1000 module (J4908A)

HP ProCurve Switch 4148gl

- 4-slot chassis with two 24-port 10/100TX modules and two empty slots may contain additional connectivity modules:
 - 24-port 10/100TX
 - 6-port mini-GBIC module
 - 6-port 100TX/1000T
 - 3-port HP transceiver module (not shown)
 - 20-port 10/100/1000 module with two mini-GBICs

HP ProCurve Switch 4108gl bundle

- 8-slot chassis with three 24-port 10/100 modules and one 3-port HP transceiver module

Rev. 4.11b

15

HP ProCurve Switch 6108



HP ProCurve Switch 6108

- Six 10/100-TX/1000-T ports
- Two “dual-personality” ports: 10/100/1000 RJ-45 port or mini-GBIC slot
- 16 Gbps backplane

Rev. 4.11b

16

HP ProCurve Switch 2800 series



HP ProCurve Switch 2824

- 20 10/100-TX/1000-T ports
- Four “dual-personality” ports
- 48 Gbps backplane



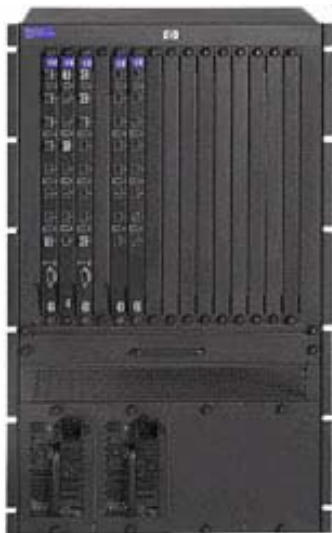
HP ProCurve Switch 2848

- 44 10/100-TX/1000-T ports
- Four “dual-personality” ports
- 96 Gbps backplane

Rev. 4.11b

17

HP ProCurve Routing Switch 9300m series



HP ProCurve Routing Switch 9300m series

- 4, 8, or 15 slots
- Wide variety of connectivity modules (10/100/1000/10 Gig)
- Multiple protocol Layer 3 forwarding (IP/IPX/Appletalk)
- IP protocols include RIP, OSPF, BGP4, VRRP, DVMRP and PIM



Rev. 4.11b

18

HP ProCurve Wireless Access Point 420



HP ProCurve Wireless Access Point 420

- Full-featured, WiFi certified IEEE 802.11g single-radio access point
- Per-user/per-session dynamic WEP key assignment and automatic replacement
- IEEE 802.1X EAP support
- Integrated 802.3af Power over Ethernet
- IEEE 802.1Q compliant VLAN support and tagging
- Lifetime warranty

Rev. 4.11b

19

HP ProCurve Wireless Access Point 520wl



HP ProCurve Wireless Access Point 520wl

- Two slots allow user selection of radio cards
- IEEE 802.1Q compliant VLAN support and tagging
- IEEE 802.1X EAP support
- Lifetime warranty

Accessories

- HP ProCurve Wireless 802.11b Access Point Card 150wl
- HP ProCurve Wireless Range Extender Antenna
- HP ProCurve Wireless 802.11a Access Point Kit 100wl

Rev. 4.11b

20

HP ProCurve Secure Access 700wl series



HP ProCurve Access Controller 720wl

- Manages all user sessions on controlled access points
- Maintains session persistence
- Enforces policy rights

HP ProCurve Access Control Server 740wl

- Provides centralized security configuration and policy management
- Coordinates all user activity based on policy configuration
- Capable of managing thousands of users

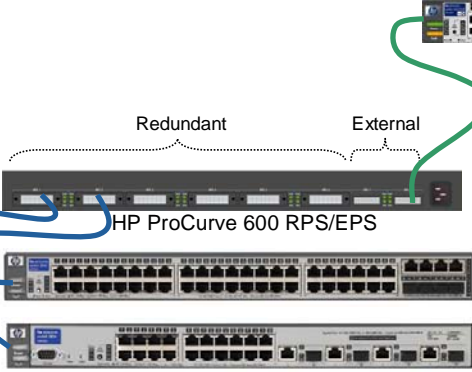
HP ProCurve Access Manager 760wl

- All-in-one solution for small LAN or branch office
- Combines features of 720wl and 740wl




Rev. 4.11b 21

HP ProCurve 600 Redundant and External Power Supply



HP ProCurve 600 Redundant and External Power Supply (J8168A)

- Provides redundant power for one of six switches connected to redundant power supply ports
- Supplies external power for HP ProCurve IEEE 802.3af Power over Ethernet compatible devices such as HP ProCurve 2626-PWR, 2650-PWR, and 5300xl series switches



Rev. 4.11b 22

HP ProCurve products

ProCurve Manager
ProCurve Manager Plus

9300 series

5300xl series

2800 series

4100gl series

4000m

6108

2600-PWR series

420

520wl

2600 series

2500 series

700wl series



600 RPS/EPS

Rev. 4.11b 23

HP ProCurve product feature sets

Switch Family	# of VLANs	IP routing	# of Trunks	Rapid STP	Mult. STP	Meshing	Traffic classification	PoE	IGMP
2500 series	30	No	one 4-port trunk	Yes	No	No	Preserves existing mark	No	Data driven
2600 series	30	Yes; 16 static routes	6 trunks; 4 ports per trunk	Yes	No	No	Port-based, preserves existing mark	Yes	Data driven
2800 series	60	Yes; 16 static routes	6 trunks; 4 ports per trunk	Yes	No	No	Port-based, preserves existing mark	No	Data driven
4100gl series	30	Yes; 16 static routes	6 trunks; 4 ports per trunk	Yes	No	No	Port-based, preserves existing mark	No	IGMP snooping
5300xl series	256	Yes; dynamic and 16 static	36 trunks; 8 ports per trunk	Yes	Yes	Yes	Full QoS – 802.1p and DiffServ	Yes	Data driven
6108	30	Yes; 16 static routes	6 trunks; 4 ports per trunk	Yes	No	No	Port-based, preserves existing mark	No	Data driven

Rev. 4.11b 24

	<p>Questions ?</p> 
---	---