

Web Services@CA

Laszlo Mihalka
Senior Consultant
Laszlo.Mihalka@ca.com
ca.com/solutions/webservices

The Web Services Vision

- Create an open environment where consumers* of Web Services can locate and work with providers of Web Services, through Web-based heterogeneous systems

*employees, partners and customers

What Do Web Services Do?

Deliver technology to:

- Decompose applications into reusable easy-to-integrate “building blocks”
- Decouple applications and services from delivery channels
- Build dynamic electronic relationships using the Internet

Help business to:

- Connect islands of information and heterogeneous systems
- Enable users to access applications and services from anywhere
- Make eBusiness process automation faster and easier

Web Services – Adoption Trends

- By 2004 virtually every one of the Global 2000 will have implemented Web Services in a mission critical environment (Hurwitz Group)
- Gartner predicts that by 2005 Web Services will be integral to new application solutions for Fortune 2000 companies and, in this same timeframe, two thirds of Web Services implementations will be based on both J2EE and .NET (Mark Driver, Gartner, Inc. March 2002)
- Web Services Solutions: A potential \$28Billion Market (Gartner “Web Services Solutions: A Potential \$28 Billion Market.” M. Cantera, J. Correia, Feb. 2002)

Web Services – Benefit Trends

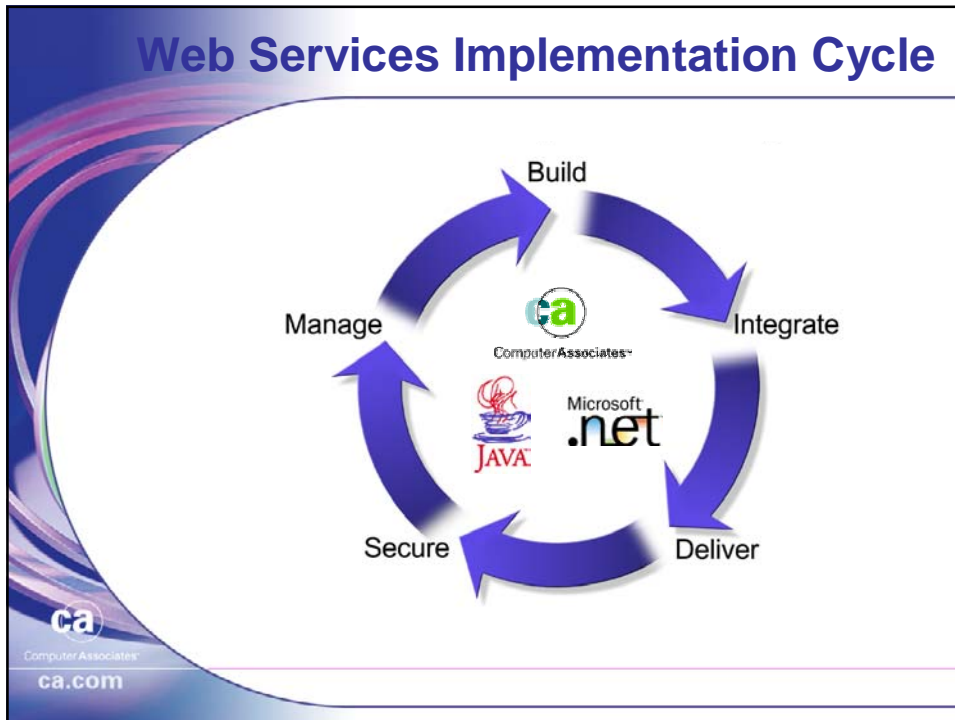
- By 2005, the aggressive use of Web services will drive a 30% increase in the efficiency of IT development projects (Gartner FirstTake “The Hype is Right: Web Services Will Deliver Immediate Benefits,” D. Plummer, W. Andrews, October 2002)
- Integration costs are 40% of major application integration (Dan Sholler, Senior Program Director, META Group.)

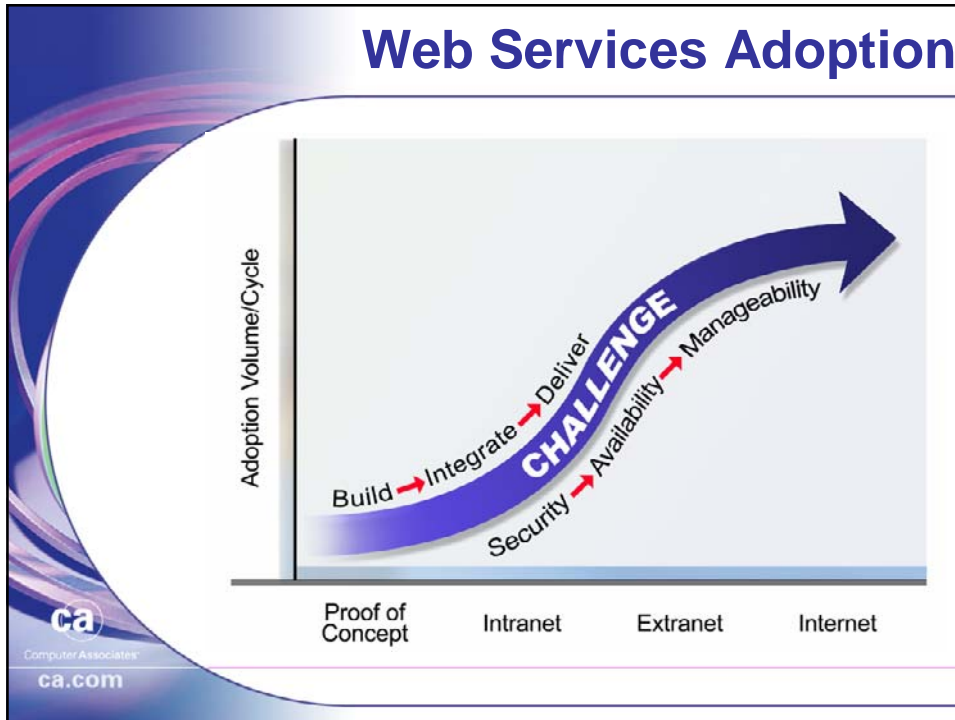
What are Web Services?

- A set of open standards that enable applications, developed through the assembly of reusable components, to dynamically interact with other applications over the Web

Web Services Stack











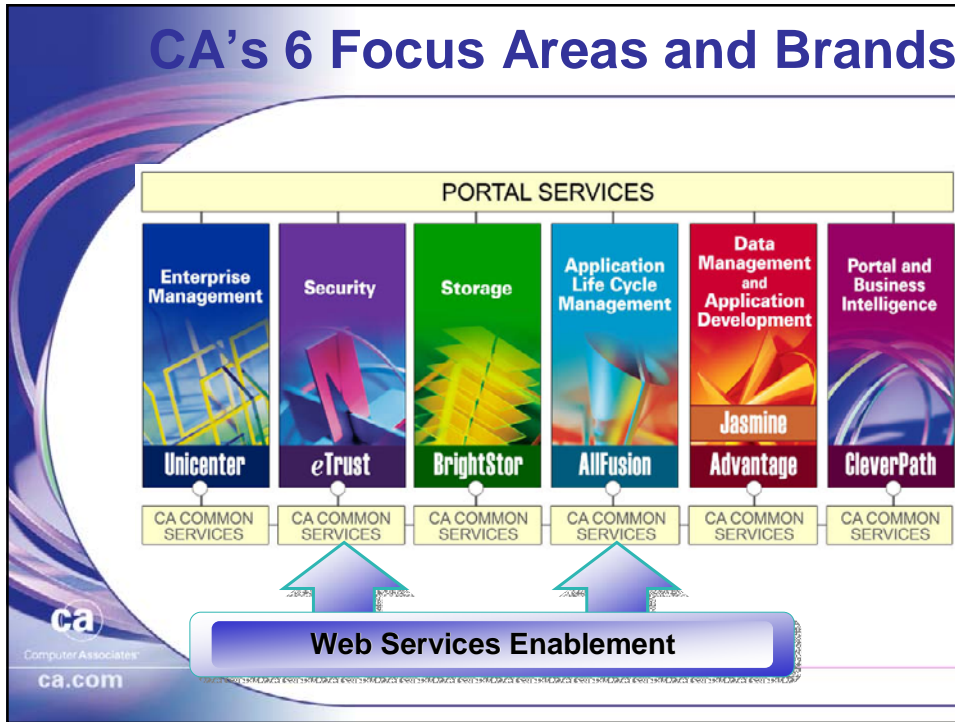
CA's Web Services Solutions

- CA offers the industry's most comprehensive solutions to build, integrate, deliver, secure and manage Web Services (WS)


Computer Associates®



- **Increasing agility** by integrating WS access to legacy data, as well as by orchestrating and sharing new services, to deliver a complete solution
- **Minimizing risk** in a WS architecture by securing systems, applications and data
- **Optimizing reliability, availability and performance** by managing the WS infrastructure and storage resources



 Computer Associates®
 ca.com



Build, Integrate and Deliver WS to Increase Agility

- Organizations need to
 - Create new applications
 - Manage the development process
 - Link to legacy applications and data
 - Provide personalized viewing mechanisms for new services

Web Services Accelerate the Need to Integrate Legacy Apps and to Build New Ones


 Computer Associates®
 ca.com

Build, Integrate and Deliver

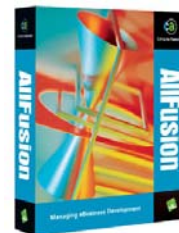
- Rapidly develop and implement at reduced costs
 - Develop complex components
 - Deploy with control
 - Integrate legacy systems seamlessly
 - Deliver access from any source to any device



Market Leading Component Development and Integration Solutions

Manage the Development Process

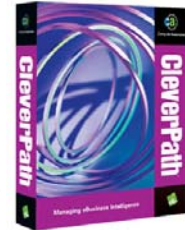
- Integrate information access and sharing
 - Enable rapid implementation
 - Integrate with flexibility
 - Support UML modeling



Market Leading Life Cycle Management and Modeling Solutions

Integrate and Deliver Web Services

- Integrate and personalize applications and information in a customized portal
 - Expose and visualize Web Services to users including those with wireless devices
 - Access applications in context across multiple points of integration
 - Leverage the power of prediction and rules-based intelligence



Market Leading Portal Solutions

Secure Web Services

- Create an end-to-end security infrastructure
 - Access – extend the boundaries of the enterprise
 - Manage – manage security across the enterprise
 - Defend – defend against internet threats



Market Leading Security Solutions

Optimize Web Services Operations

- Manage all environments
 - Deliver seamless control
 - J2EE and .NET Application Servers
 - Network and systems management
 - Database management
 - Application management
 - Optimize Service Levels (QoS)
 - Predict outages



**Market Leading Enterprise
Management Solutions**

Optimize Web Services Storage

- Preserve and restore Web Services infrastructure & data availability
 - Backup and recover critical data, applications and systems
 - Optimize storage resource and media management
 - Provide SAN and NAS Management
 - View all storage objects



**The Industry's Fastest
Backup Solution**

How is CA Different?

- CA has a strong business-centric approach
 - **NOT** platform-, application server- or tools-centric
- CA has a unique position as the most open partner for eBusiness
 - Neutrality
 - Independence
 - Credibility
 - Standards support
- CA meets all critical management requirements

CA – Web Services Today & Tomorrow

- Web Services support is available today
 - Information management – buildtime
 - Infrastructure management – runtime
- More capabilities are in development
 - eTrust Enterprise UDDI Registry


Information Management Solutions

CleverPath – Portal and Business Intelligence

- CleverPath Portal
- *CleverPath Aion Business Rules Expert*
- *CleverPath Predictive Analysis Server*

AllFusion – Application Life Cycle Management

- AllFusion Component Modeler
- AllFusion Harvest Change Manager
- AllFusion Change Manager Enterprise Workbench



Computer Associates®
ca.com

Available | *Beta*

Information Management Solutions

Advantage – Data Management and Application Development

- *Advantage Joe*
- Advantage Plex
- Advantage Integration Server
- Advantage Ingres Enterprise DB


Computer Associates®
ca.com

Available | *Beta*

Infrastructure Management Solutions

Unicenter – Enterprise Management

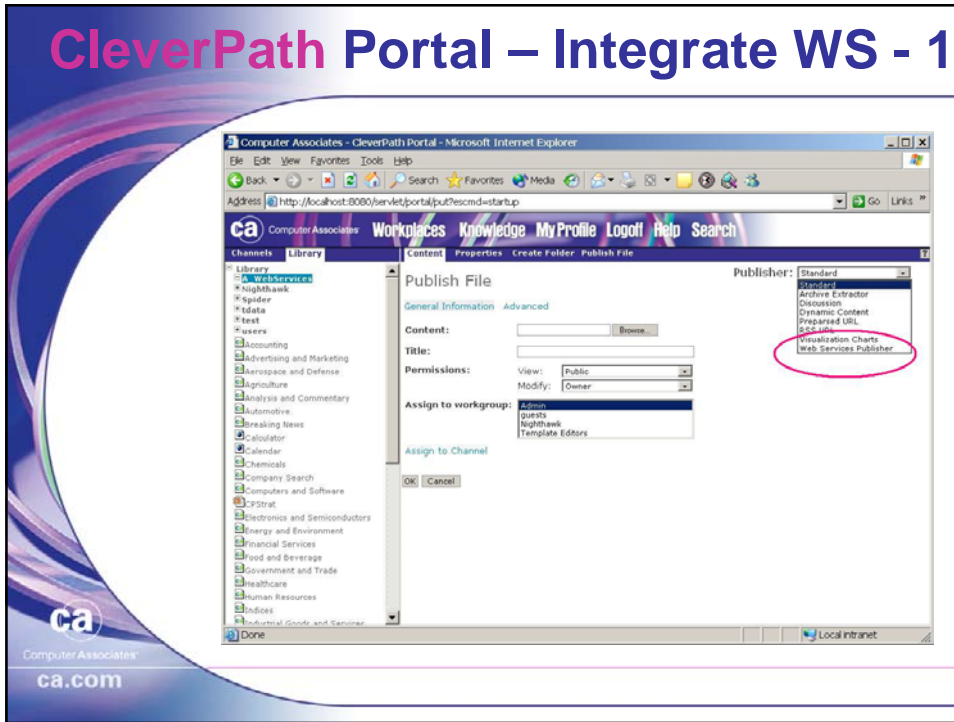
- Unicenter Management for WebLogic
- Unicenter Management for WebSphere
- Unicenter Management for Oracle9iAS
- Unicenter Management for Web Servers

Integrate WS in 8 Steps

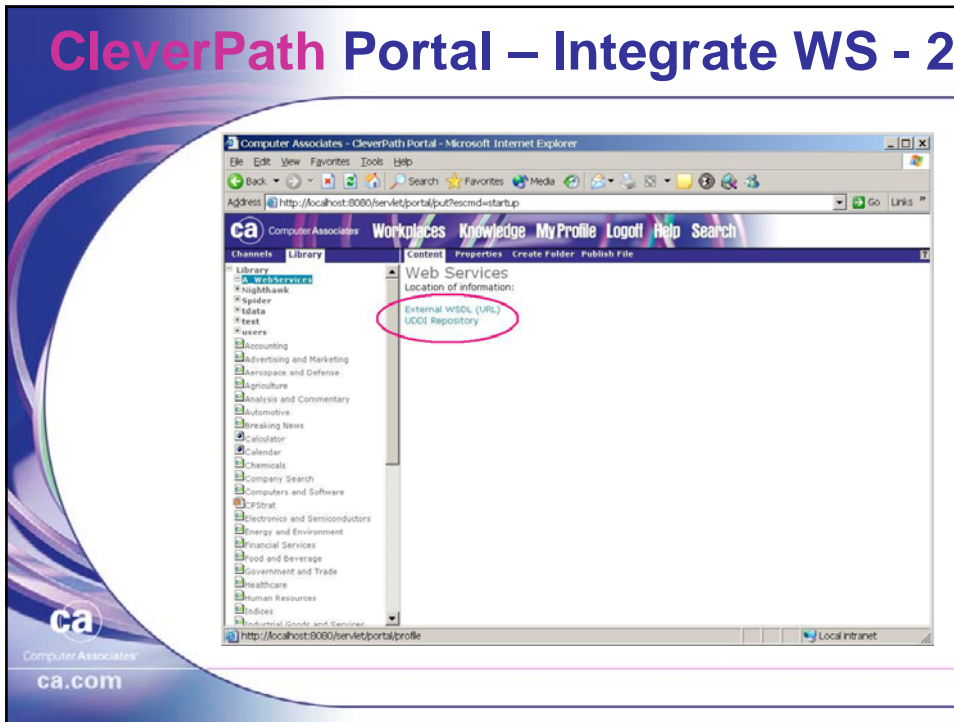
with CleverPath
Portal



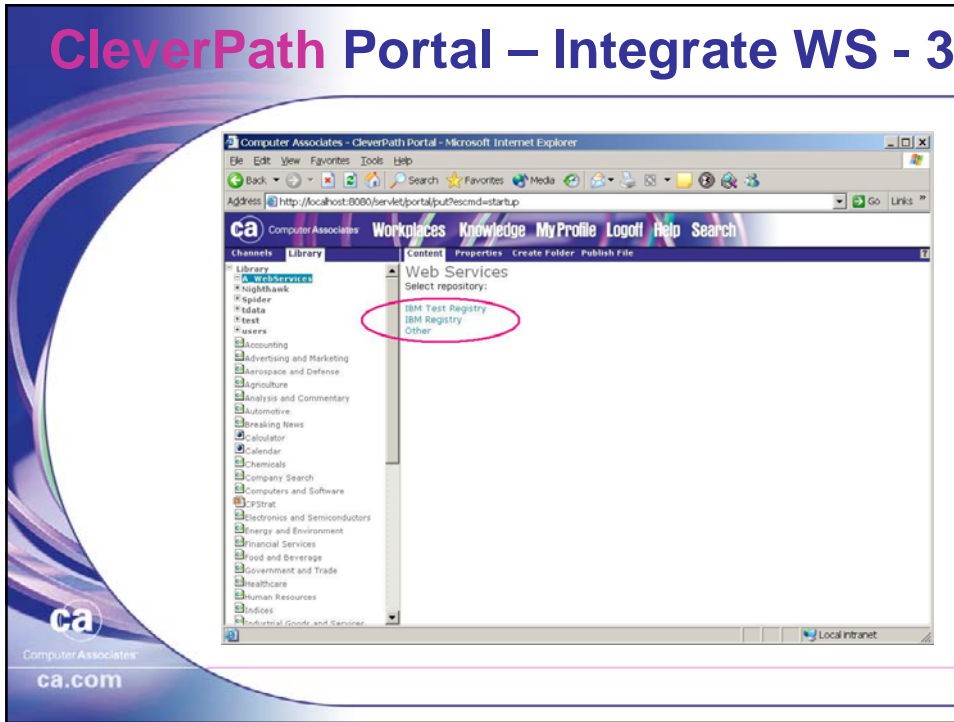
CleverPath Portal – Integrate WS - 1



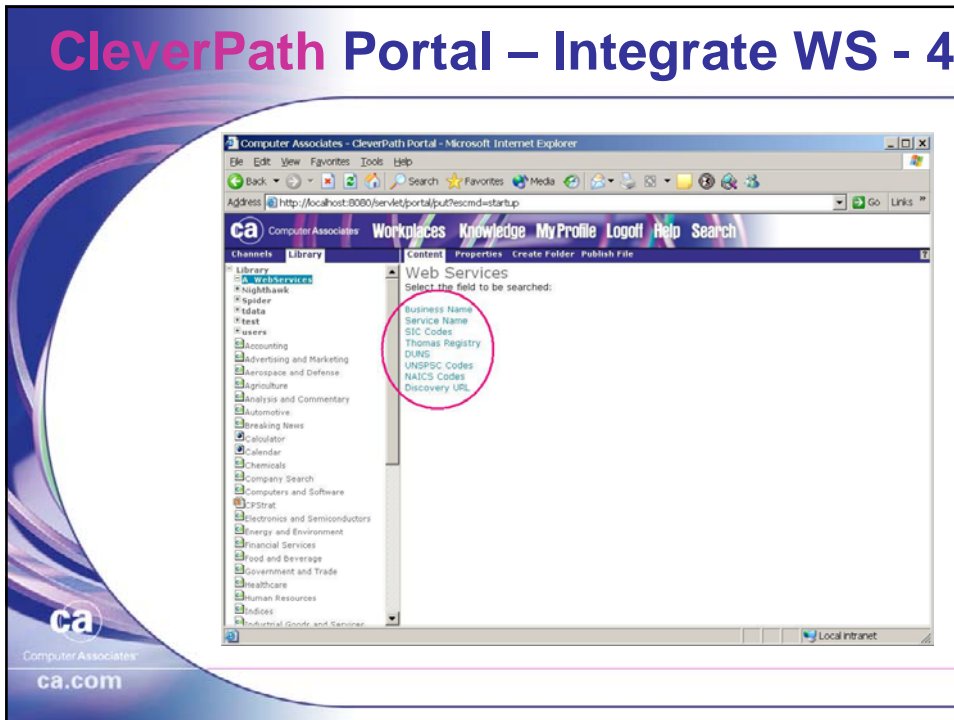
CleverPath Portal – Integrate WS - 2



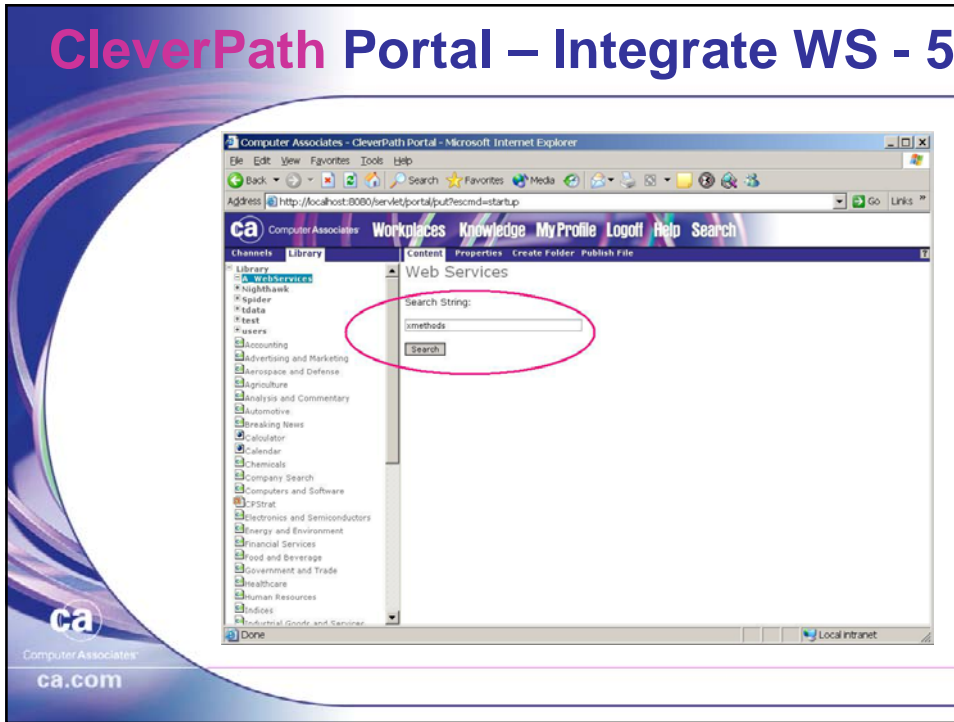
CleverPath Portal – Integrate WS - 3



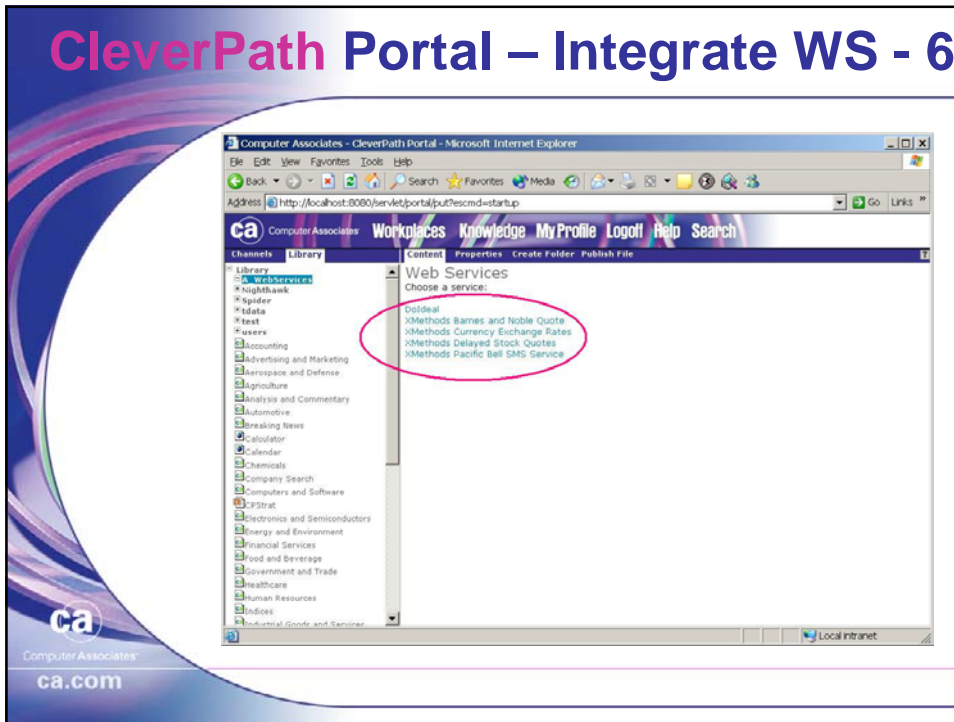
CleverPath Portal – Integrate WS - 4



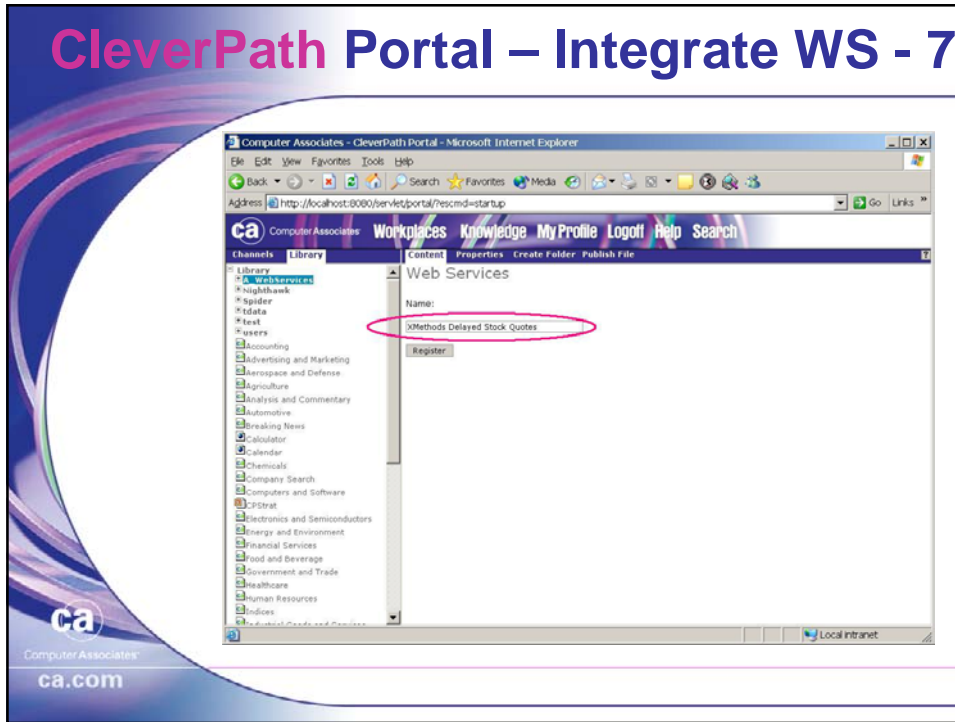
CleverPath Portal – Integrate WS - 5



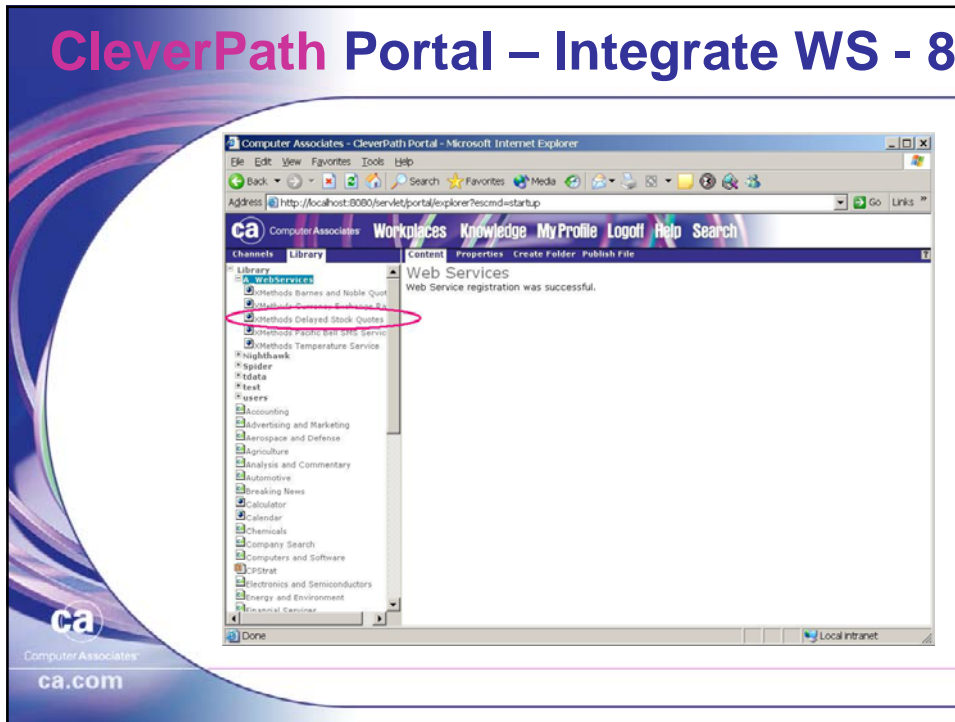
CleverPath Portal – Integrate WS - 6



CleverPath Portal – Integrate WS - 7

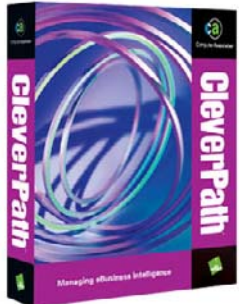


CleverPath Portal – Integrate WS - 8



Personalize WS in 3 Steps

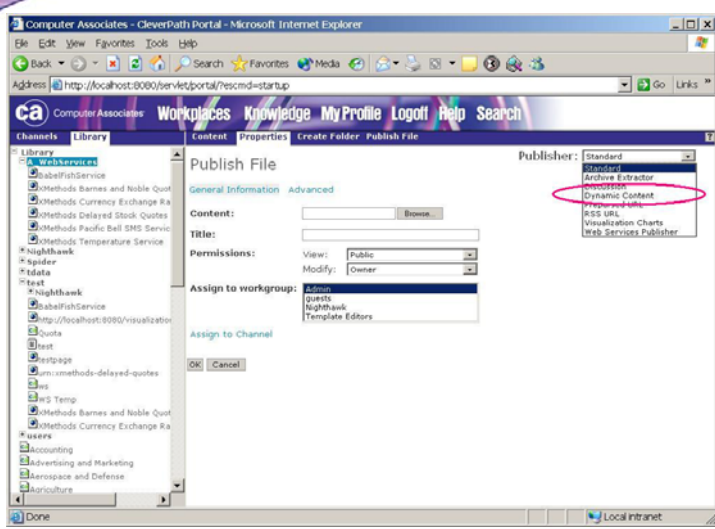
with CleverPath Portal



Computer Associates
ca.com

The image shows a software box for CleverPath. The box is purple and blue with the text 'CleverPath' on the sides and 'Managing Business Intelligence' at the bottom.

CleverPath Portal – Personalize WS - 1



Computer Associates
ca.com

The screenshot shows a web browser window displaying the CleverPath Portal. The address bar shows 'http://localhost:8080/servelet/portal/rescmd=startup'. The page has a navigation bar with 'Workplaces Knowledge My Profile Logout Help Search'. Below the navigation bar is a 'Publish File' dialog box. The 'Publisher' dropdown menu is open, showing options: 'Standard', 'Archive Extractor', 'Business', 'Dynamic Content', 'Prepared HTML', 'RSS URL', 'Visualization Charts', and 'Web Services Publisher'. The 'Dynamic Content' option is circled in red. The 'Assign to workgroup' dropdown shows 'Admin', 'Guests', 'Nighthawk', and 'Template Editors'.

CleverPath Portal – Personalize WS - 2

Computer Associates - CleverPath Portal - Microsoft Internet Explorer

Address: http://localhost:8000/serve/portal/rescmd=startup

Channels: Library Content Properties Create Folder Publish File

Library

- WebServices
 - AbellFishService
 - Methods Barnes and Noble Quot
 - Methods Currency Exchange Ra
 - Methods Delayed Stock Quotes
 - Methods Pacific Bell SMS Servic
 - Methods Temperature Service
- Nighthawk
 - Spider
 - Tdata
 - Text
 - Nighthawk
 - AbellFishService
 - http://localhost:8000/visualization
 - Quota
 - Rest
 - Restpage
 - urn:smethods-delayed-quotes
 - es
 - es3 Temp
 - Methods Barnes and Noble Quot
 - Methods Currency Exchange Ra
- users
 - Accounting
 - Advertising and Marketing
 - Aerospace and Defense
 - Agriculture

Dynamic Content Element

Title: Methods Delayed Stock Quotes Personal

Invoking Class: com.ca.portal.extensions.WebServicesPortlet

Schedule in Minutes: 00

Permissions: View: Public; Modify: Owner

Assign to Workgroup: Admin, guests, Nighthawk, Template Editors

Required on Workplace:

Be sure the CLASSPATH is correct. The server must be able to locate the invoking class.

OK Cancel

Computer Associates
ca.com

CleverPath Portal – Personalize WS - 3

Computer Associates - CleverPath Portal - Microsoft Internet Explorer

Address: http://localhost:8000/serve/portal/rescmd=startup

Channels: Library Content Properties

Library

- WebServices
 - AbellFishService
 - Methods Barnes and Noble Quot
 - Methods Currency Exchange Ra
 - Methods Delayed Stock Quotes
 - Methods Pacific Bell SMS Servic
 - Methods Temperature Service
- Nighthawk
 - Spider
 - Tdata
 - Text
 - Nighthawk
 - AbellFishService
 - http://localhost:8000/visualization
 - Quota
 - Rest
 - Restpage
 - urn:smethods-delayed-quotes
 - es
 - es3 Temp
 - Methods Barnes and Noble Quot
 - Methods Currency Exchange Ra
- users
 - Accounting
 - Advertising and Marketing
 - Aerospace and Defense

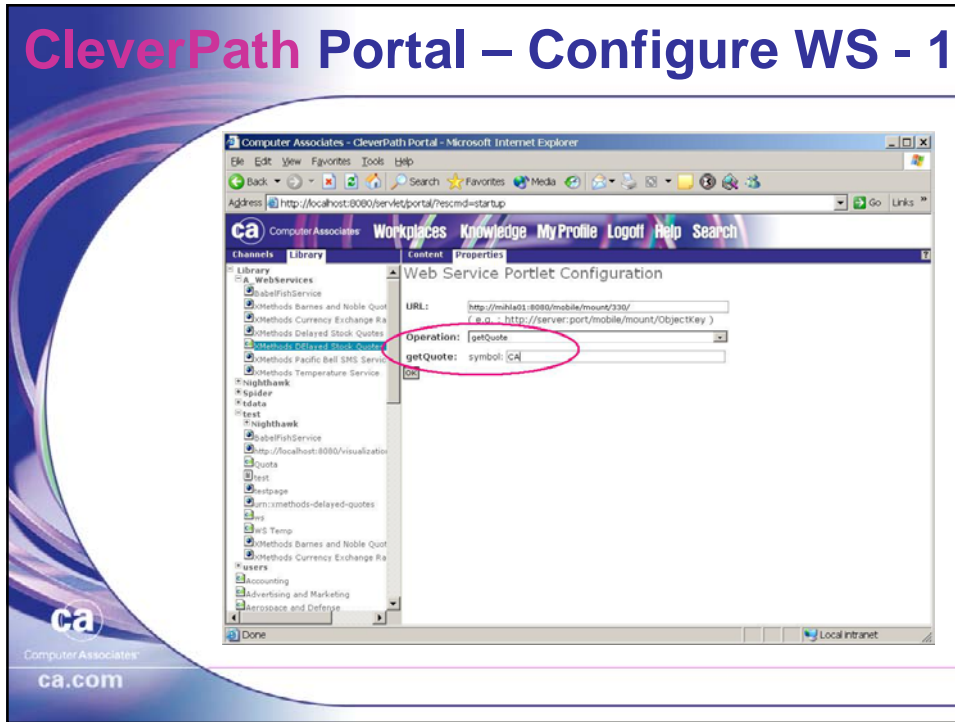
Web Service Portlet Configuration

URL: http://mha01:8000/mobile/mount/330/
(e.g. : http://server:port/mobile/mount/ObjectKey)

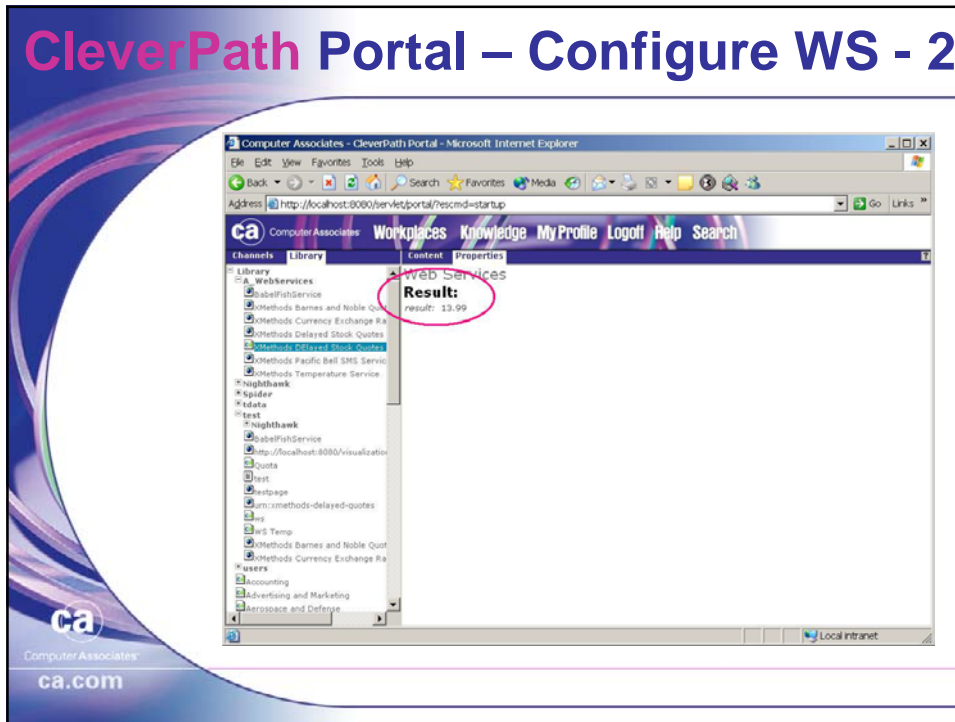
OK

Computer Associates
ca.com

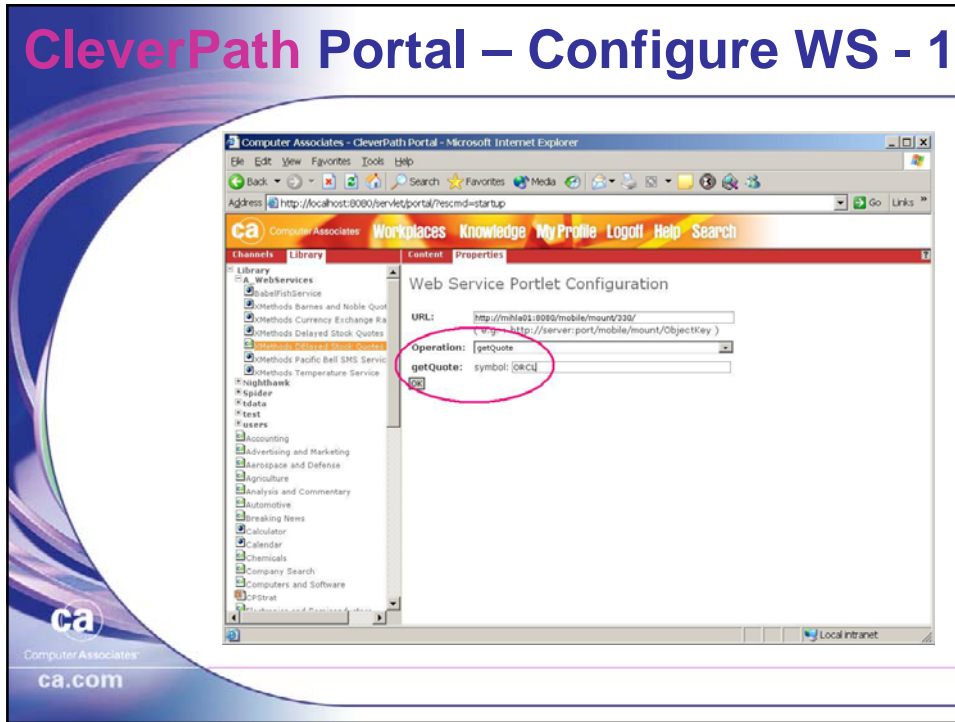
CleverPath Portal – Configure WS - 1



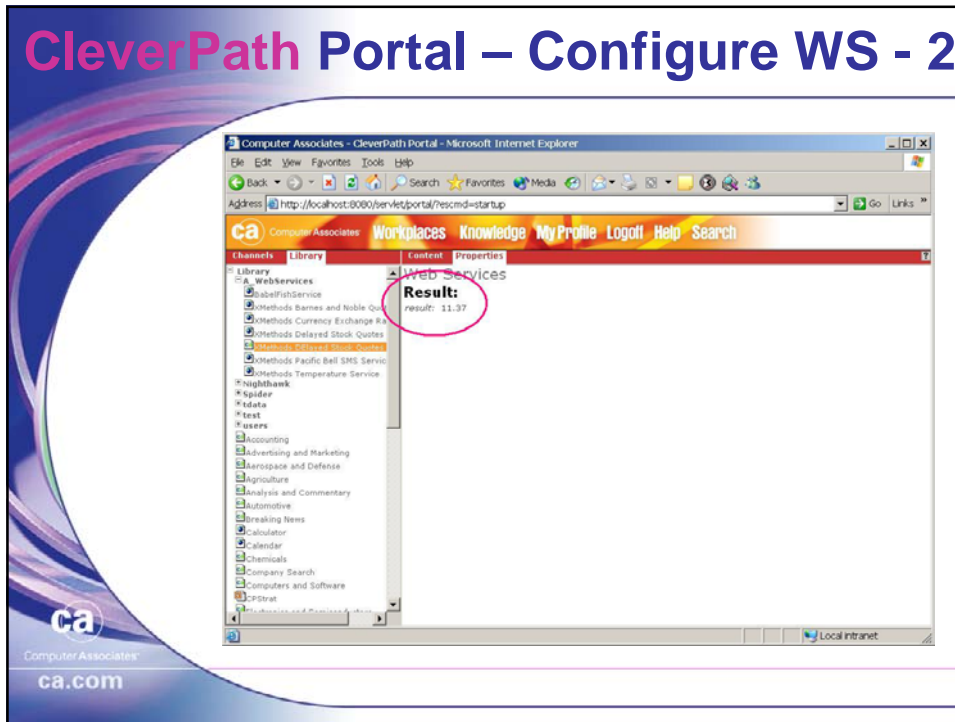
CleverPath Portal – Configure WS - 2



CleverPath Portal – Configure WS - 1



CleverPath Portal – Configure WS - 2

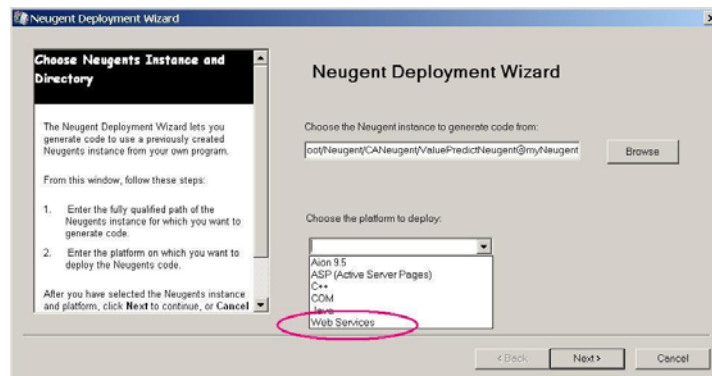


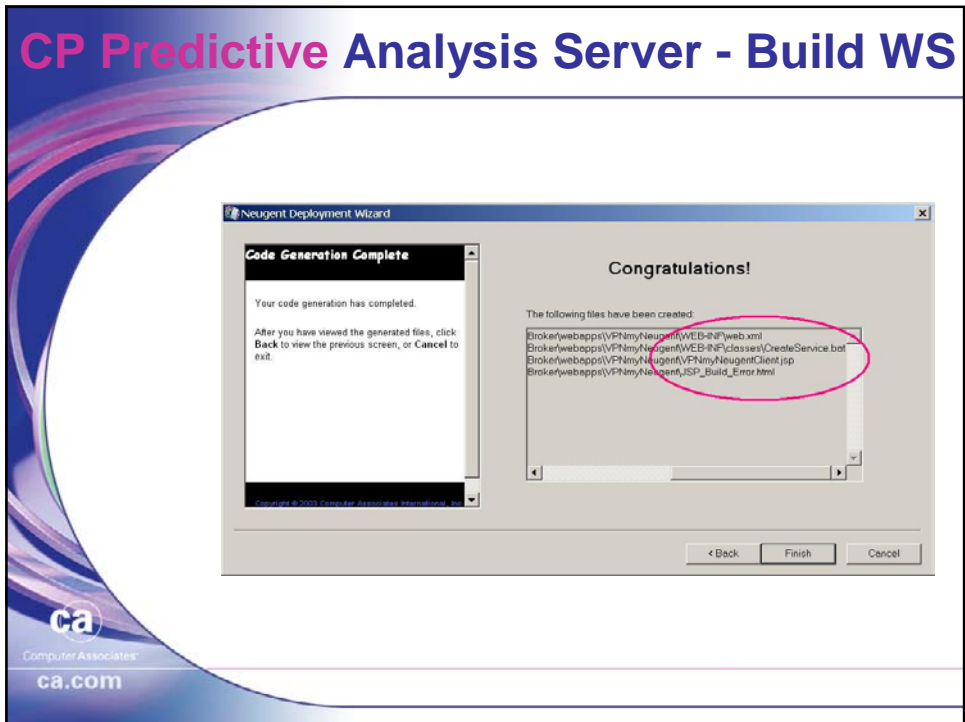
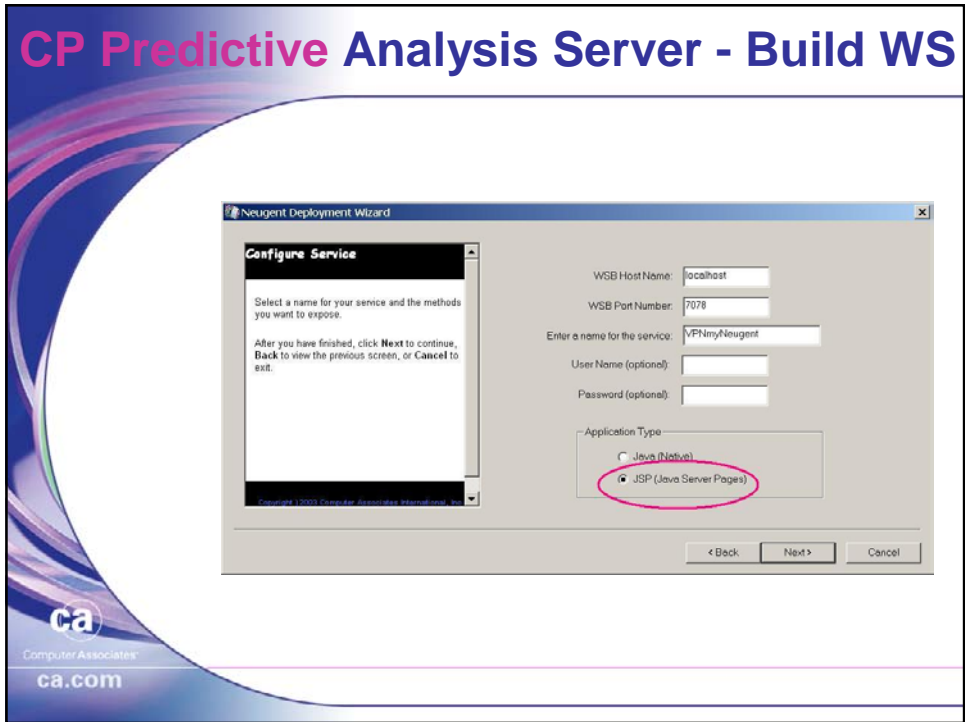
Build WS in 3 Steps

with CleverPath
Predictive Analysis
Server



CP Predictive Analysis Server - Build WS





CP Predictive Analysis Server - Build WS

myNeugent

ENR:

BESC:

UMSA:

consult

PG035:

Computer Associates®
ca.com

CP Predictive Analysis Server - Build WS

myNeugent

ENR:

BESC:

UMSA:

consult

PG035: 1.0

Computer Associates®
ca.com

CA World – Termin, Lokation

- 13. – 17. Juli 2003
- Mandalay Bay Convention Center
- Las Vegas, Nevada
- <http://ca.com/germany/caworld/>

CA World - Schwerpunkte

- Informative Sessions zu neusten CA-Technologien
- Praktische Demos im Exhibition Center zu allen CA-Softwarelösungen
- Kostenlose CA-Schulungskurse
- Persönliche Gesprächstermine mit CA-Entwicklern und Support-Mitarbeitern im Technical Campground
- Austausch mit Fachkollegen und Branchenexperten



Web Services@CA

Laszlo Mihalka
Senior Consultant
Laszlo.Mihalka@ca.com
ca.com/solutions/webservices


Computer Associates®
ca.com