

OpenVMS ECP Collector / Analyzer

Vortrag 2A03

Manfred.Kaser@compaq.com

Compaq Computer München

Topics

- Product Overview
 - Enterprise Performance Product - ECP
- General Information
 - Current Version
 - Installation
 - Usage

Features

- Low CPU overhead
- High-resolution data collection
- Extensive system metrics collection

Missing Features

- Rules Engine
- Hotfile Statistics
- Limited Graphs

3

ECP Collector and Analyzer

- ECP Collector - V5.4A
OpenVMS V5.5-2 - V7.3
- ECP Analyzer - V5.4A
OpenVMS V5.5-2 - V7.3
- NO License required !
- Kitname : VECPO54A.A-D -> LP-CD , Internet

4

OpenVMS Data Collector

- Two collectors
 - Sample driven
 - Event driven (optional) - only used for Capacity Planning
- 2-5% average CPU overhead, may vary
 - system load
 - sampling interval
 - performance metrics to be collected
- Collects an average of 5-10MB data per day
- Event monitor option significantly increases data volume; used only for capacity planning

5

ECP Collector

- \$ plan collect=event/motif
- \$ plan collect=poll/status
- \$ plan collect=poll/version
- \$ help plan
- VMScluster systems should run Time Services

6

\$ plan coll=event/motif

DIGITAL Capacity Planner - CP/Collect

File Options Help

Data Collection Common Attributes

Start Time Thu 11 Apr 2002 09 48

End Time Thu 11 Apr 2002 11 48

Type Sample & Event Sample Only Event Only

Directory SYS\$SYSDEVICE:[KASER]

Batch Suffix %ECP_BATCH

Batch Qualifiers /NOPRINT

Individual Node Attributes

MUHT05 MUHT13

Start DC Select Close

ECP Logicals

- Defined in sys\$startup:ecp\$startup.com
- ECP\$LIBRARY
 - hardware DBA files
- ECP\$DC_QUEUE
 - default - SYS\$BATCH
- ECP\$DC_INTERVAL
 - sampling interval in seconds - default=300
- ECP\$PERF_DATA
 - location of .CPC files

Starting Data Collection

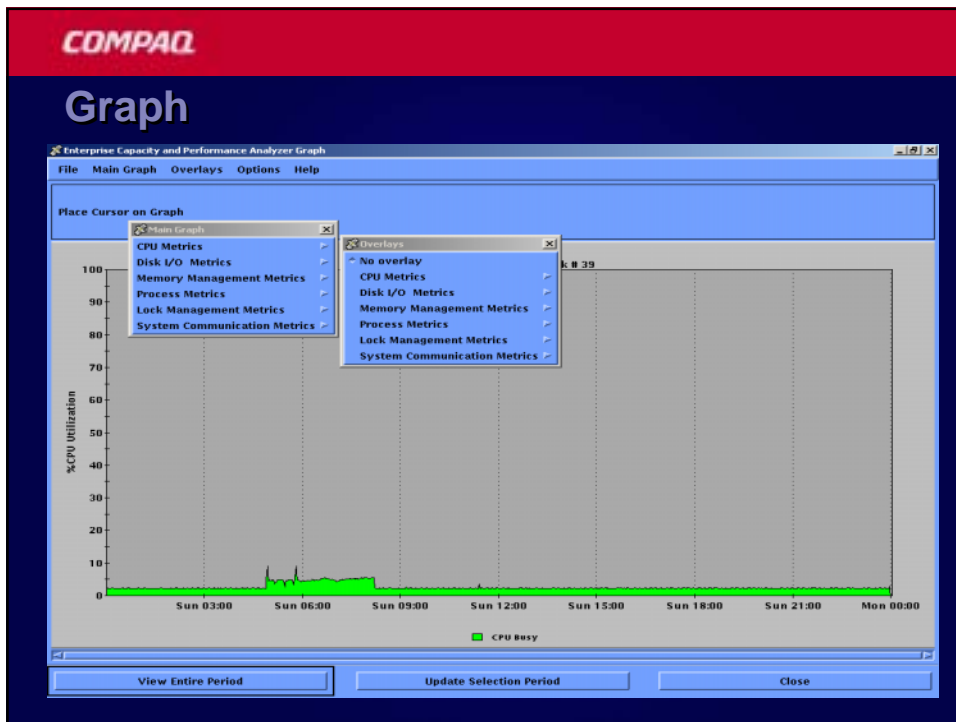
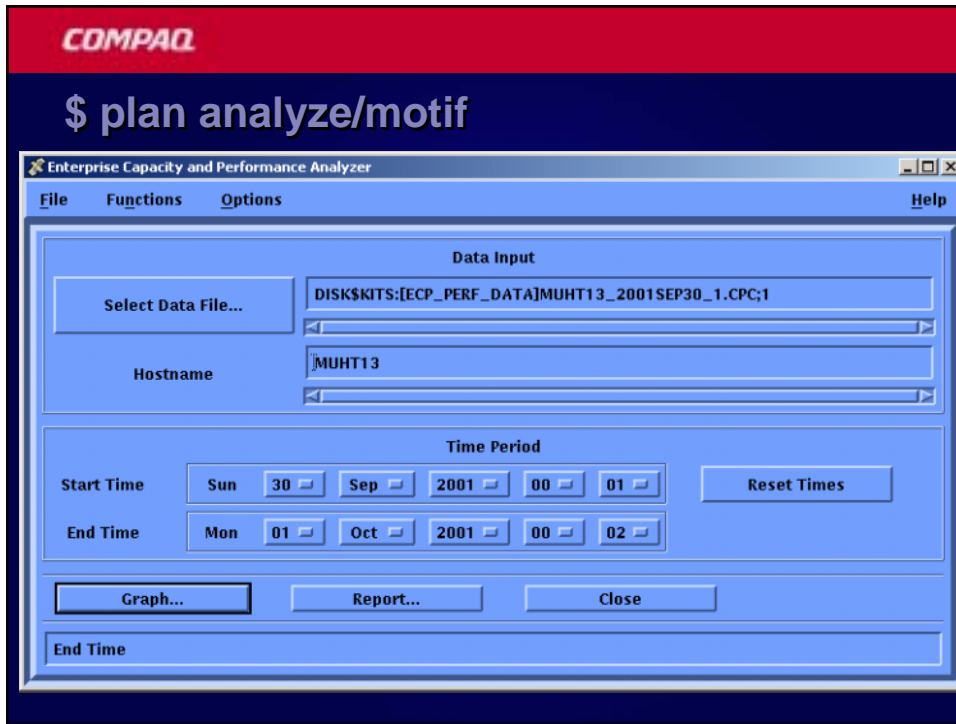
- ECP\$MANAGER.COM
 - located in ECP\$LIBRARY
 - starts data collection
 - submits itself to ECP\$DC_QUEUE every 24h
- Start at Boot
 - SYSTARTUP_VMS.COM
 - \$ @sys\$startup:ecp\$startup
 - \$ @ecp\$library:ecp\$manager

9

ECP Analyzer Interface

- \$ plan analyze/qualifiers
 - dcl interface
 - ascii report file(s)
 - csv file(s) - see ECP Analyzer Manual
- \$ plan analyze/motif
 - Motif window

10



COMPAQ



13